



Professional & residential
PIZZA OVENS

A passion for Pizza



All About **ZIO CIRO**

The company is based in Sardinia, the beautiful Italian Island in the mediterranean sea. Founded to supply refractory materials, the Zio Ciro brand has been in production for over 20 years. They supply their products throughout the World.

Zio Ciro wood/gas fired ovens are entirely produced in an artisanal factory by high-skilled workers with years of experience in the field, using top-quality machinery that delivers top-quality products. 100% made in Italy, and produced by hand in the Zio Ciro factory. They are proud of their quality and heritage.

There are a variety of mobile professional and residential ovens available from the 'Subito Cotto' line. These ovens can be used outside to bake pizza and a wide range of food items. These ovens are portable and can be placed outside, in the garden, on a balcony or terrace.



Perfect for
*Outdoor
living*





TRANSPORTABLE OVENS

The 'Subito Cotto' line is ready to use and finished. These can be moved by several people easily.



4 SIZES TO CHOOSE FROM

We have created several models for your needs. From one to several pizzas!



WOOD AND GAS

The Mini Cotto is gas only. Dome 60/80/100 models can be supplied for both Wood and Gas! Please specify when ordering.



SAFE FOR FOOD

All the refractory materials used to build our ovens are safe for food use!



WEATHER RESISTANT

The oven and dome are made to be weather resistant.



MADE IN REFRACTORY

Internally the floor and dome are made from quality refractory materials.



HIGH TEMPERATURE

The refractory materials will reach temperatures above 450°C.



LONG HEAT RETENTION

Due to its design and materials used the oven will naturally retain heat.



COOKING SPEED

Fast cooking at higher temperatures. Heat up is normally less than one hour.

Unique
CHARACTERISTICS
OF OUR OVENS

SUBITO COTTO *Mini*



Fully portable

Subito Cotto MINI is a real little refractory gas pizza oven, the first of its kind, fully portable and weighing less than 45 kg. It has an inside diameter of 40cm and reaches a temperature of 450°C (750 F°) in just 30 minutes. The MINI is ideal for baking one pizza at a time (33/34cm in diameter) and can be placed either in the house* or outside in the garden, on a balcony or on a terrace.

Thanks to the refractory dome, the oven, even when it is switched off, keeps the heat inside and can be used to cook many other dishes such as fish, bread, vegetables and sweets. The oven is supplied with a gas burner produced in Italy, available in both natural & LPG Gas.

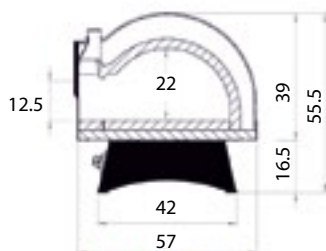
*If being used indoors the oven must be used in a well vented safe area.



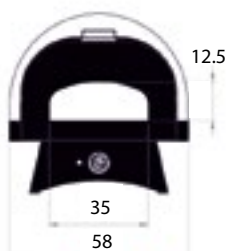
Subito Cotto MINI is a certified product 100% made in Italy. All elements and the components of the Subito Cotto line are produced in Italy in a single factory and are completely handmade.

Standard colour – Black fascia front & white dome

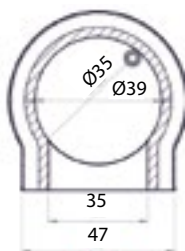
Oven Dimensions SUBITO COTTO Mini



Cross Section



Frontal View



Base

The oven is delivered on a pallet and is ready to unpack. Please read the user manual and instructions fully.



Ready to use,
indoor* or outdoor



1 Pizza Capacity



Weight
45kg



Gas (Max)
1.2Kg/h



Temp in 30mins
450 °C/750F°



*If being used indoors the oven must be used in a well vented safe area.

A man with a beard and mustache, wearing a grey baseball cap and a denim apron over a dark shirt, is smiling at the camera. He is holding a pizza peel with a blue handle, pulling a pizza out of a large, dark, dome-shaped wood-fired oven. The oven is glowing with orange light from the fire inside. The background is dark and out of focus.

SUBITO COTTO

60/80/100

Enjoy restaurant quality pizza!

The SUBITO COTTO is a true small lightweight and mobile wood-fired oven, with a dome made entirely of high quality refractory concrete. The ovens are available in a wood or gas version.

As in traditional wood-fired ovens, once the cooking temperature has been reached, the oven maintains this temperature for a long time, even after the fire or flame has been extinguished. The Subito Cotto is ideal for cooking Italian pizza, but it is also suitable for cooking other foods such as bread, meat, fish, vegetables and desserts.

Certified 100% Made in Italy

All Subito Cotto models are ready to use. They do not have to be assembled, installed or finished. .

They are lightweight and can be transported and used even in small spaces such as terraces, kitchens, gardens, food trailers or trucks.

Their wood and gas consumption are also very low. Both the wood fired and gas-fired versions reach a cooking temperature of 450°C (850°F) in just 40 minutes.

When being used in a mobile trailer or vehicle, it is essential you follow our suggested installation manual or consult a professional mobile van manufacturer. This is to ensure the oven and its refractory are not damaged during transportation.

The Subito Cotto ovens are certified 100% Made in Italy. All the components are directly manufactured in Italy by the company according to a rigorous artisanal method.

The gas-fired version of the oven is equipped with a burner made in Italy and is capable of being used with natural gas, propane, LPG or methane.



Standard colour – Black fascia front & white dome.
Other colours available upon request

SUBITO COTTO *Model 60*



Ready to use,
indoor* or outdoor



1-2 Pizza Capacity



Weight
100kg



Gas (Max)
1.2Kg/h
Wood
4Kg/h



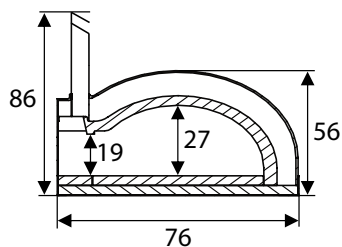
Temp in 40mins
450 °C/850F°

Model 60 -
Available in Wood & Gas

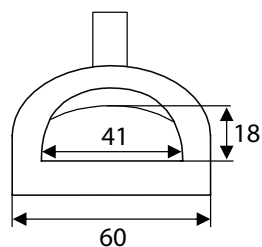


*If being used indoors the oven must be used in a well vented safe area.

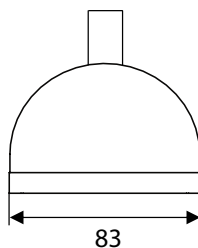
Oven Dimensions SUBITO COTTO 60



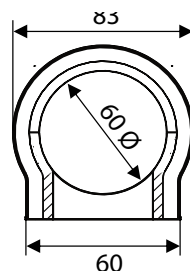
Cross Section



Front View



Back View



Plan



SUBITO
COTTO
Model 80



*Certified 100%
Made in Italy*

Model 80 -
Available in Wood & Gas



Ready to use,
indoor* or outdoor



1-3 Pizza Capacity



Weight
180kg

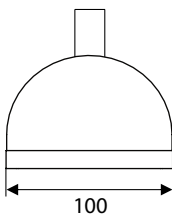


Gas (Max)
1.2Kg/h
Wood
6Kg/h

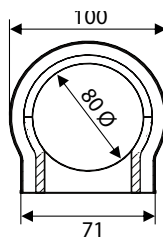


Temp in 50mins
450 °C/850°F

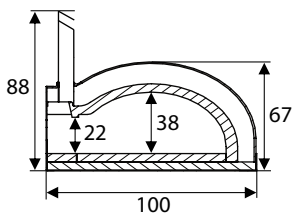
Oven Dimensions SUBITO COTTO 80



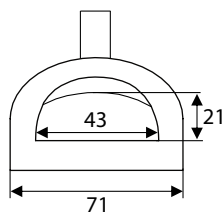
Back View



Plan



Cross Section



Front View

ZIO CIRO

*If being used indoors the oven must be used in a well vented safe area.

SUBITO
COTTO

Model 100



Model 100 -
Available in Wood & Gas

 **ZIO CIRÒ**

Assembled
& Ready
To Use



Ready to use,
indoor* or outdoor



4-5 Pizza Capacity



Weight
300kg



Gas (Max)
1.7Kg/h

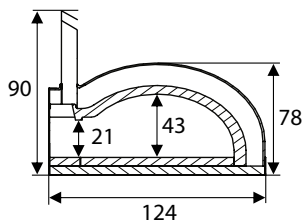
Wood
10Kg/h



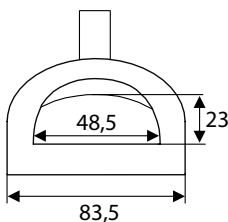
Temp in 40mins
450 °C/850F°

Oven Dimensions SUBITO COTTO 100

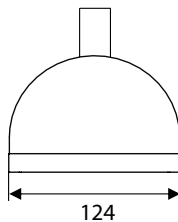
Oven Dimensions (cm)



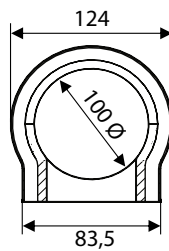
Cross Section



Front View



Back View



Plan

*If being used indoors the oven must be used in a well vented safe area.

ACCESSORIES



A range of accessories available for both residential and professional use. Everything you will need to create a beautiful product using your Zio Ciro oven. Digital kitchen scales, non-slip mixing bowls for your ingredients, kiln dried natural pizza logs, kindling and firelighters, dough scrapers, pizza peels and much more. We have also introduced smaller dough boxes which are perfect for use on a pizza truck or trailer with limited space.

Compatible
& Quality
Accessories

The Complete Range



Optional Extras

FOR YOUR OVEN

GAS CONTROL FOR MODELS 60/80

Everything you need to connect your oven to a propane gas bottle if you would prefer your oven to be gas fired oven instead of/as well as woodfired.

Order Details

SKU CODE: ZC-GC60-80

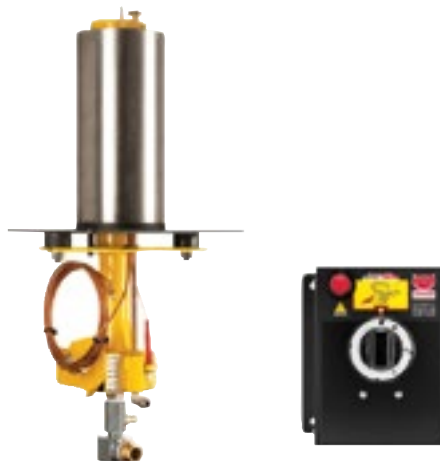


GAS CONTROL FOR MODELS 100

Everything you need to connect your oven to a propane gas bottle if you would prefer your oven to be gas fired oven instead of/as well as woodfired.

Order Details

SKU CODE: ZC-GC100



*Please note: When fitting a gas burner into the oven, the oven must be shielded to protect from wind and reverse air flow. A skirt or surround must be fitted to the oven or stand.



FLUE ADAPTOR

The flue adaptor that changes the square flue on the oven to a round flue.

Order Details

SKU CODE: ZC-ADP-S-R



ANTI VIBRATION MOUNTS (SET OF 4)

The anti-vibration mounts must be used when mounting the oven on a mobile trailer or in a catering van. They come as standard as a set of 4.

Order Details

SKU CODE: ZC-AV/K



SWIVEL CASTOR

The swivel castors allow for ease of moving and transporting your Zio Ciro oven. They come as standard as a set of 4.

Order Details

SKU CODE: ZC-CASTORS

Please note: If you plan to install any of the Zio Ciro ovens into a mobile van or trailer it is essential that you take professional advice from a manufacturer or conversion specialist. This is to ensure the suspension is sufficient to protect the pizza oven from any damage to the floor, stand or refractory. Failure to do this may void all or any warrantee from the manufacturer. A set of anti-vibration mounts are available from Zio Ciro, but these mounts may not be suitable to protect the oven and its refractory parts from damage if the vehicle or trailer is not fitted with sufficient suspension to ensure safe travel when mobile catering. Please seek professional advice to install your oven correctly.

Optional Extras

FOR YOUR OVEN

ADAPTOR

The oven adaptor is available in two colours – black or stainless steel. The adaptor is used to connect the oven to the flue system.

Order Details

SKU CODE:

Stainless steel: ZC-ADAPTOR

Black: ZC-5TWProADAPTOR



1000mm FLUE PIPE

1000mm twin walled flue pipe – available in two colours – black or stainless steel. The flue pipes allow you to simply fit an extraction system for your oven if you are using it inside a building or a vehicle. The length of the flue pipe you require will be determined by the distance you have between the top of the oven where you wish the flue to end outside of the building or vehicle. Also available in 500mm length.

Order Details

SKU CODE:

Stainless steel: ZC-1000PIPES

Black: ZC-5TWPro1000mm





500mm FLUE PIPE

500mm twin walled flue pipe – available in two colours – black or stainless steel. The flue pipes allow you to simply fit an extraction system for your oven if you are using it inside a building or a vehicle. The length of the flue pipe you require will be determined by the distance you have between the top of the oven where you wish the flue to end outside of the building or vehicle. Also available in 1000mm length.

Order Details

SKU CODE:

Stainless steel: ZC-500PIPE

Black: ZC-5TWPro500mm



RAIN CAP FOR CHIMNEY

The rain cap for your Zio Ciro chimney is available in two colours – black or stainless steel. It fits on top of the flue system for outdoor use.

Order Details

SKU CODE:

Stainless steel: ZC-RAINCAPSS

Black: ZC-5TWProCap

Pizza ACCESSORIES



SKU CODE:
ES10-VAR

Bowl volume: 15L.

Mixer weight: 35KG.

Mixer dims:
209x48x38cm.

ELIANI 10KG DOUGH MIXER

Perfect for the small pizzeria and for those dedicated pizza chefs and bakers that require a mixer for testing new recipes. All are fitted with a 13 amp plug and come standard as a variable speed machine. 18 speed single phase machine that mixes up to 10KG total dough weight. Shafts mounted on ball bearings, with a fixed bowl, spiral, shaft and safety guard in stainless steel.



SKU CODE:
KT600Y

Can detect from
-50°C to +600°C.

Powered by 2 AAA
batteries (included).

KETOTEK LASER Thermometer Gun

Can be switched between °C and °F, perfect for measuring the temperature in your pizza oven.



SKU CODE:
**EJENDALS-
TEGERA-464**

Heat Resistant

Reuseable

Contact Heat
Resistance: 250°C

HIGH TEMPERATURE WOODBURNING OVEN GLOVES

These Heat Resistant Gloves are heavy synthetic work gloves with heat-resistant properties. Made with tear-resistant nitrile rubber, they have the ability to withstand contact heat up to 250°C, making them suitable for use in kitchens and other hot environments.



SKU CODE:
BK-LGP10

KILN DRIED NATURAL PIZZA LOGS – 8KG

8KG

Moisture content
below 20%.

Approximately 8KG of kiln dried natural pizza logs. 100% natural, produced from British grown timber, sustainably and ethically sourced. Main species beech and ash wood.



SKU CODE:
ALO-HAR.TS

KILN DRIED KINDLING – 2.65KG

2.65KG

Approximately 2.65KG of kiln dried kindling wood to be used as a fire starter. Extremely dry and reliable, ideal for woodburning pizza ovens. Made from recycled waste wood of the highest calibre – the perfect way to get the fire started.



SKU CODE:
KT600Y

ECO-FRIENDLY NATURAL WOOD WOOL FIRELIGHTERS – 0.3KG.

0.3KG

Burn time: 7 minutes

Natural wood wool firelighters for woodburning oven fires. Easy to light with minimal smoke and low odour, safe and easy to use. Made from small pieces of wood, wool and wax.

Pizza ACCESSORIES



SKU CODE:
FLMATCH

Dims:
20(h)x110(w)
x65(d)mm

Contents:
60 matches

Weight: 35g

SAFETY MATCHES

These extra long matches offer a safe way of lighting your Zio Ciro Oven. With safety head and long length to help avoid burning your fingers.

Can be used for barbecues, open fires, stoves, gas fires, camping stoves and cookers. Extra long for added safety.



SKU CODE:
VA-LGSHLR

Log Container:
Diameter 36cm x Height
30cm, Thickness: 0.8mm

Kindling Container:
Diameter 20cm x Height
22cm, Thickness: 0.6mm

Match Container:
Diameter 7cm x Height
14.5cm, Thickness: 0.3mm

METAL BASKET SET

This Metal Bucket Set consists of three sturdy storage containers. Perfect for keeping logs, kindling and matches close-by but tidied away.

The built-in handles make for easy carrying. Attractive but hardwearing black finish means they will look the part in any venue.

Product Weight 3.70kg.

Package Dimensions 38 x 38 x 32cm



SKU CODE:
AM-ABWL

12 litre capacity.

Measures
34x30x29cm.

ASH BUCKET WITH LID

Vintage style ash bucket. Made from powder coated steel and finished with the words ASH on the front. Comes with a lid to ensure everything stays safely inside until you are ready to discard.



SKU CODE:
GI-SET3P/120

**TRIPIZZA 3 PIECE KIT INCLUDING
HANDLE – 120CM TOTAL LENGTH**

Includes:
1x 20cm turning
peel, 1x 33x33cm
large peel, 1
brass bristled
oven brush, 1 tool
holder. 120cm
length.

A complete kit designed for home users. Total length of all tools 120cm with 33cm large peel head and Ø20cm small turning peel head. Kit made from stainless steel and aluminium.



SKU CODE:
GI-SET3P/90

**TRIPIZZA 3 PIECE KIT INCLUDING
HANDLE – 90CM TOTAL LENGTH**

Includes:
1x 20cm turning
peel, 1x 30x30cm
large peel, 1
brass bristled
oven brush, 1
tool holder. 90cm
length.

A complete kit designed for home users. Total length of all tools 90cm with 30cm large peel head and Ø20cm small turning peel head. Kit made from stainless steel and aluminium.



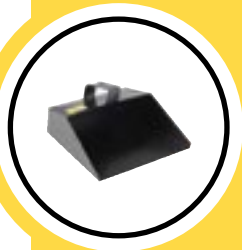
SKU CODE:
GI-AC-PL

ASH SHOVEL

Measures:
22 x 20 cm.
125cm long
Weighs 0.77KG.

Stainless steel wood fired oven shovel, used to remove ash from the oven. Made with anodised aluminium black handle. We can cut the handle to any length you require, a free service we offer on all long-handled items.

Pizza ACCESSORIES



SKU CODE:
RS-912-7693

297mm wide

PROFESSIONAL DUSTPAN

A great value professional black dust pan. Manufactured out of a high-quality metal this large hooded dust pan is an excellent choice when you have to collect the dust and debris from your pizza oven. Sturdy loop handle – 297mm wide.



SKU CODE:
AM-TONG01

Jaw opening width
approximately 12"

HEAVY DUTY LOG GRABBER TONGS

Heavy duty steel log grabbers with scissor mechanism which allows you to grab and manoeuvre the hot burning logs. Measures 5/8" x 4" x 26".



SKU CODE:
VAS403010

Size 40x30x10cm.

8.5cm deep
internally.

SMALL PIZZA DOUGH BOXES 40X30CM

Plastic pizza dough boxes to store your pizza dough, keeping it as fresh as possible for longer. Plastic and easy-to-clean box. Perfect for mobile pizza ovens, at-home proving, or kitchens with smaller storage spaces.



**SKU CODE:
COP4030**

Lid for 40x30cm
dough boxes.

SMALL PIZZA DOUGH BOX LIDS

Plastic pizza dough box lids to store your pizza dough, keeping it as fresh as possible for longer. Plastic and easy-to-clean.



**SKU CODE:
CN-MADIE**

The thickness of
the wooden strips
used is 2 cm.

Capacity: 3 kg of
dough

ANCIENT WOODEN BASKET

For mixing dough by hand with lid included. Sideboard made of solid evaporated Austrian Fir wood with traditional system. The wood, of high strength and durability, has not undergone any harmful treatment, is natural and suitable for use in food. The wood has no odors that can stick to the food it comes into contact with.



**SKU CODE:
RS-PRO-1L**

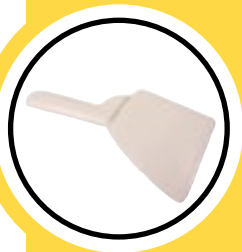
1 litre capacity.

Material in
polypropylene.

1L MEASURING JUG

Ergonomically designed handle with thumb grip for easy carrying.

Pizza ACCESSORIES



SKU CODE:
ALP-340010

4X4" head, 9.5" long
in total.

Also available in
green. (for gluten
free)

WHITE DOUGH SCRAPER

Dough scraper with tapered sides for easy pick up, a plastic construction that will not damage your trays, and is designed for a long life of use. Made of extremely durable material and designed for heavy duty, long time use.



SKU CODE:
ALP-HAR.TS

Stainless Steel

TABLESPOON

Manufactured from a high grade stainless steel, parish pattern and polished tablespoon.



SKU CODE:
AM-SASCA01

Capacity from 1g –
5KG.

DIGITAL KITCHEN SCALES

Large Salter scales, easy to read LCD screen. You can switch between metric grams, imperial ounces, or utilise the aquatronic function to measure liquid in millilitres.



**SKU CODE:
RO-MIXBO3**

Stainless steel
with silicone
bases.

Includes: 1x litre
bowl, 1x 2.5 litre
bowl, 1x 4 litre
bowl.

**SET OF 3 STAINLESS STEEL
MIXING BOWLS**

With a silicone base for increased stability as you mix. Included are 3 airtight lids to fit each bowl so you can keep your food fresh for longer. Once you've finished, the bowls nest inside each other for easy storage.

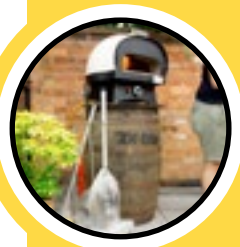


**SKU CODE:
RS-146-9080**

Dual backlit LCD
digital display.

MOISTURE METER

Reliable and high-quality moisture meter. Manufactured to industry standards, this machine is a fantastic solution for providing moisture content level management in materials such as wood, plasterboard and bricks. Perfect for checking the moisture content in your wood before loading into your oven.



**SKU CODE:
KT600Y**

Whisky barrel size
- 40 gallons

Measures approx.
88cm high

**VINTAGE WHISKY BARREL STAND
WITH ROUND METAL TOP**

Vintage Whisky oak barrel stand for Oven, with black painted metal top to keep the oven steady and supported. Designed for Mini Zio Cirò Gas oven ONLY.



Professional & Residential
PIZZA OVENS

Distributed by
WHITES FOODSERVICE EQUIPMENT
www.whites-foodequip.co.uk

Unit 8, Padgets Lane,
Redditch
B98 0RA

